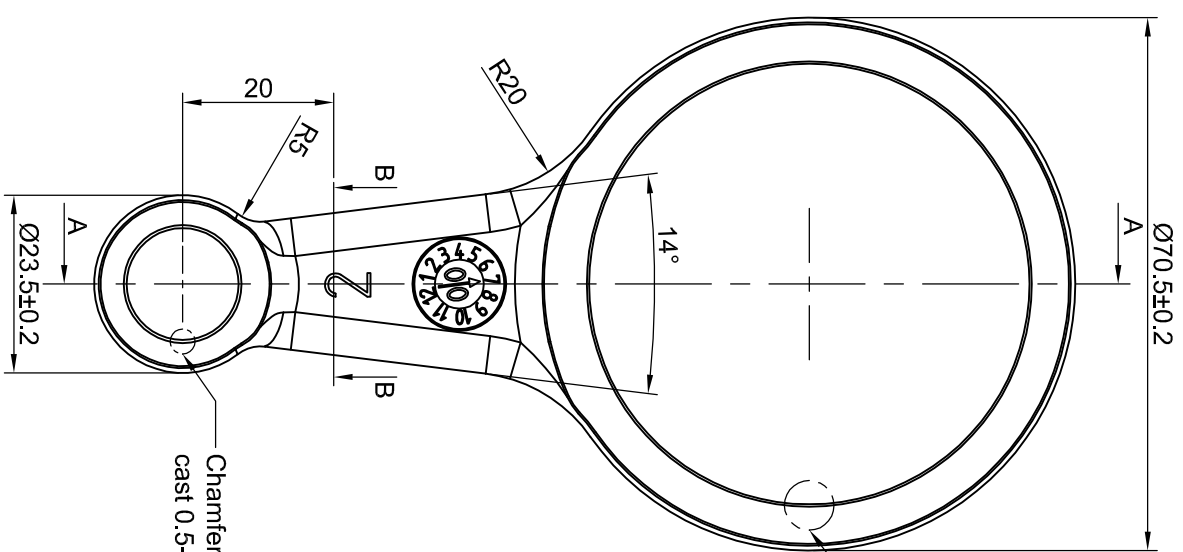
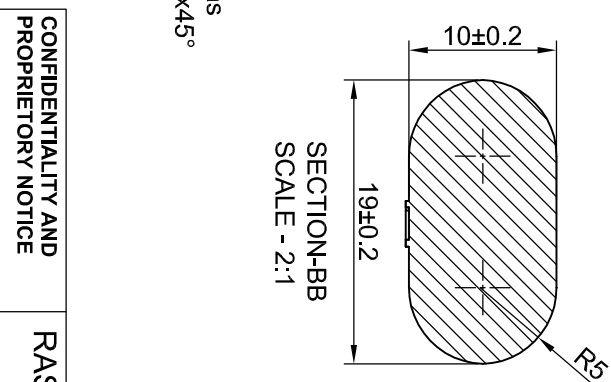


SECTION-AA



ISOMETRIC VIEW
SCALE - 1:2



SECTION-BB
SCALE - 2:1

Aluminium Casting Alloy (LM6)
Chemical Composition

Element	Percentage (%)
Copper	0.1 max.
Magnesium	0.10 max.
Silicon	10.0-13.0
Iron	0.6 max.
Manganese	0.5 max.
Nickel	0.1 max.
Zink	0.1 max.
Lead	0.1 max.
Tin	0.05 max.
Titanium	0.2 max.
Aluminium	Remainder

- NOTES**
1. BEND AND TWIST MAX. 0.010 mm.
 2. CLEANINESS = 1mg/pcs.
 3. HARDNESS = 55-60 BHN
 4. CHILL CAST OR HIGH PRESSURE DIE METHOD.
 5. NO BLOW HOLES ACCEPTED.
 6. ALL DIMENSIONS ARE IN mm UNLESS OTHERWISE SPECIFIED.
 7. DO NOT SCALE DRAWING.

MADE BY	CHK. BY	APP. BY
SINGH, C.K.	KUMAR, M.	
DATED	DATED	DATED
05-OCT-2009	05-OCT-2009	

CONFIDENTIALITY AND PROPRIETARY NOTICE

THIS DRAWING IS A PROPERTY OF RASCO AND NO PORTION OR WHOLE OF THIS DRAWING MAY BE COPIED, DISTRIBUTED OR PUBLISHED WITHOUT THE PERMISSION OF RASCO.

TITLE		MATERIAL		DRG. No.		PART No.		SCALE	
CONNECTING ROD - SAMPLE		LM6		XXX		XXX		1:1	
THIRD ANGLE PROJECTION		SIZE		SHEET					
		A4		1 OF 1					

TOLERANCES

DECIMALS	ANGLES
.X ±.3	±.5°
.XX ±.20	
.XXX ±.100	

WEIGHT - 75gms (Finish)